



The Geological Society

*-serving science & profession*

# Western Regional Group

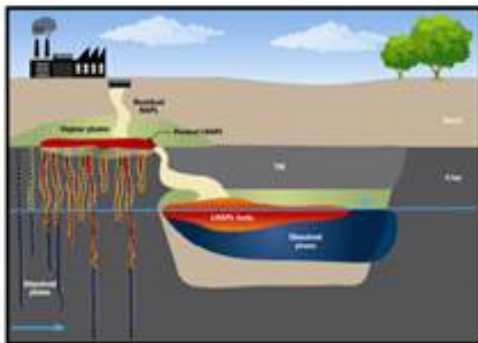
## LNAPL Handbook: guidance for the assessment and remediation of light non-aqueous liquids in the subsurface

Atkins offices, The Hub, Aztec West, Bristol  
15<sup>th</sup> September 2015. 6:30pm Start, refreshments from 6pm

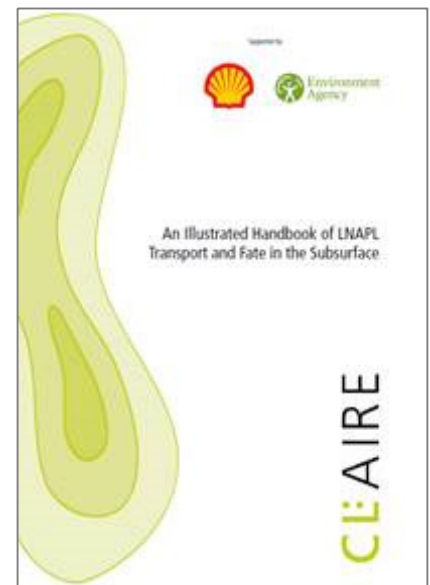
The Western Regional Group is pleased to invite Alan Thomas ERM, co-author of “An Illustrated Handbook of LNAPL Transport and Fate in the Subsurface”.

In December 2014, CL:AIRE published the LNAPL Illustrated Handbook, the eagerly awaited companion document to the Environment Agency’s DNAPL Handbook. The LNAPL Illustrated Handbook presents best-practice guidance for the assessment and remediation of light non-aqueous phase liquids (LNAPLs) in the subsurface. LNAPLs notably include fuels and oils, for example petrol (gasoline), diesel and heating oils, and are amongst the most commonly encountered organic contaminants in the subsurface environment due to their ubiquitous use, accidental release and, perhaps, poor (historical) disposal.

The LNAPL Illustrated Handbook provides a blend of technical detail and real world conceptualisation of the LNAPL problem and appropriate methods to investigate and manage it. The handbook also facilitates



access to a wealth of detailed research, guidance and case study literature within the various topics covered. It will be useful to the practitioner and research communities, and also provide a valuable educational resource to others having a less direct interest or specialised knowledge.



The LNAPL Illustrated Handbook was funded by Shell Global Solutions (UK) and comprises the work of multiple authors from universities and environmental consultancies in the UK, USA and Canada.

### Forthcoming Talks

The WRG is constantly on the lookout for fascinating talks. If you would like to present, know someone who is willing or know of a topic that would be of interest please contact the WRG committee (details below) and we will try our very best to accommodate your requests.

### Venue

Atkins, The Hub (Ground Floor), 500 Park Avenue, Aztec West, Almondsbury, Bristol, BS32 4RZ.

### Contact

For all enquiries regarding the Western Regional Group and events please contact us using the details below.

**e-mail**

Get in touch

[westernregionalgroup@gmail.com](mailto:westernregionalgroup@gmail.com)

**www**

Find us on the web

[www.geolsoc.org.uk/wrg](http://www.geolsoc.org.uk/wrg)



Connect on LinkedIn

[WRG ID: 2670120](#)



Follow us on Twitter

[@WRG\\_GeolSoc](#)

Geological Society, Burlington House, Piccadilly, London, SW1V 0JU

Tel: +44 (0)20 7434 9944

Fax: +44 (0)20 7439 8975

Email: [enquiries@geolsoc.org.uk](mailto:enquiries@geolsoc.org.uk)

Web: [www.geolsoc.org.uk](http://www.geolsoc.org.uk)

Registered Charity No. 210161